



Discover Arita's new charm
shining on its 400-year history

Arita Tourist Guidebook

Arita Town



Transportation Information in Arita



【Arita Community Bus】

Runs on the fixed routes in Arita.
Bus stops are colored in blue.

◆Fare/time: Adult (Junior High School Student and above): 200yen
Child (Elementary School Student): 100yen

〈One-day Pass〉

Adult (Junior High School Student and above): 500yen
Child (Elementary School Student): 250yen

◆Days out of service: During Arita Ceramics Fair (Apr 28 - May 6)
During Arita Sarayama Festival (Mid Oct)
New Year Holidays (Jan 1 - Jan 3)



【Taxi】

Arita Taxi Phone: 0120-42-3131 / 0955-42-3131
Saihi Kamenoi Taxi Phone: 0120-788-489 / 0955-43-3000



【Rental Car】

Car Rental Umezaki Phone: 0955-25-9373



【Rental Bike】 9:00 am – 5:00 pm

We have 3 bike stations.

Why don't you ride around the town on a fine day?

〈Regular Bike〉

Pick-up Stations: Arita-kan, Kami-arita Station

Rental Fee: 500yen/one time

Duration: One Day

〈Crossbike Type Power-assisted Bike〉

Pick-up station: KILN ARITA

Rental Fee: 1,000yen/one time (1,000yen is needed as a deposit)

〈Power-assisted Bike〉

Pick-up Stations: Arita-kan, KILN ARITA

Rental Fee: 1,000yen/one time (1,000yen is needed as a deposit)

Duration: One Day

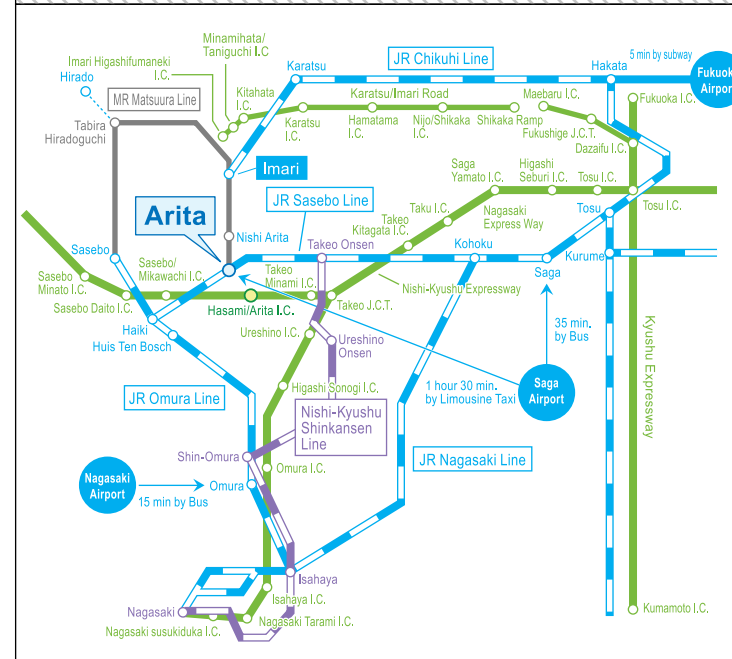
〈Velo MICHELIN Paris-Brest Sport V2〉

Pick-up Stations: KILN ARITA

Rental Fee: 500yen/one time (1,000yen is needed as a deposit)

Duration: One Day

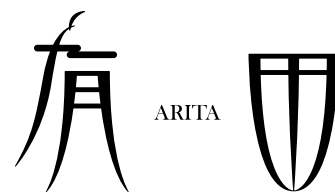
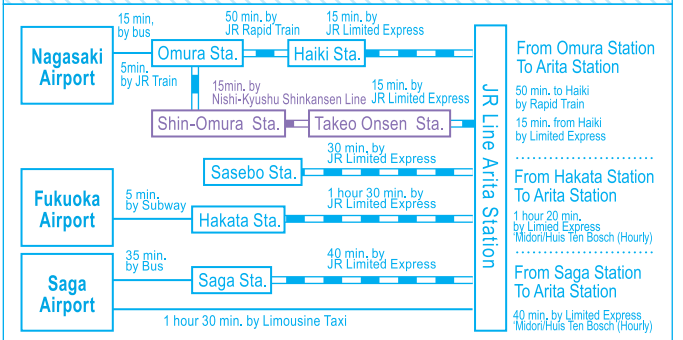
Access



Access by Car

Nagasaki Airport	About 1 hour by car Nagasaki Express Way–Nishi-Kyushu Express Way	Hasami/Arita I.C.	About 80 min. from Dazaifu I.C.
Fukuoka Airport	About 1 hour 20 min. by car Kyushu Express Way–Nagasaki Express Way– Nishi-Kyushu Express Way	Arita	About 60 min. from Tosu I.C.
Saga Airport	About 1 hour 20 min. by car General Road		About 40 min. from Saga/Yamato I.C.
			About 110 min. from Kumamoto I.C. *About 5 min. from Hasami/Arita I.C. to central Arita

Access by JR Train



Arita Town Tourist Guidebook 'ARITA'

Inquiries:

General Incorporated Association Arita Tourism Association
1-1-1 Kōbira, Arita-cho,
Nishimatsuura-gun, Saga Prefecture
Phone: 0955-43-2121 E-mail: kanko@arita.jp

Published by:

Arita Town Office, Industry & Tourism Division
2202 Tachibe-Otsu, Arita-cho,
Nishimatsuura-gun, Saga Prefecture
Phone: 0955-46-2500 E-mail: syoko@town.arita.lg.jp

aritanpano 検索

Information as of December.2023



Saga Prefecture

Arita Town



Enjoy the Delights of Arita's Four Seasons



Arita Ceramic Hina Doll Festival

■ Early February – Mid March

Hina dolls and related porcelain items made at various kilns are displayed and sold. The festival features a five-tier display of the world's biggest porcelain Hina dolls in ancient court costumes.



Arita Summer Festival

■ Late July

A summer festival held at the 'History & Culture Forest Park' with a lot of people enjoying stalls and events. After Bon dancing, the festival reaches its climax when about 1,500 fireworks are set off in the night sky.



Arita Sarayama Festival

■ Mid October

A festival known for its unique dish dance. The parade in which all residents participate in chattering small dishes in both of their hands is spectacular.



Arita Autumn Porcelain Festival

■ Late November

An autumn ceramic festival held under the theme of 'Entertain with Good Meals & Excellent Tableware'. Enjoy walking around Arita at the height of the autumn foliage.

Opening of the Climbing Season of Mt. Kurokami

■ The First Sunday of April

Shinto rituals are held to appreciate the nature of Mt. Kurokami and it is prayed for the climbers' safety.



Festival for the Father of Arita Porcelain (Touso-sai)

■ May 4

A festival to show their deep appreciation to Tozan-jinja shrine, a guardian deity of Arita, and Lee Sampyeon, the Arita ware founder.



Eighteenth Night Festival (Jyuhachi-ya)

■ August 18

A Gion festival praying for good harvest. Young men's fighting dances and rolling fireworks are dedicated to Buddha in the precincts of Ryusen-ji Temple.

ARITA x Santa Project

■ Early November – December 25

Some Santa Clauses can be seen climbing up an old red brick chimney in the former coal kiln.



Arita Ceramics Fair

■ April 29 – May 5

The largest ceramic fair in western Japan which is held from Apr 29 to May 5 every year. About 450 stores and stalls line the 4km stretch of road. More than 1 million people from all over Japan come and enjoy shopping.

Arita Firefly Festival

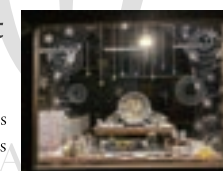
■ Late May – Early June

There are some firefly viewing spots on the Arita river that flows through the central part of Arita. It's a summer festival combined with firefly viewing.

Arita Window Display Contest

■ Late July – Late August

A competition of show window display by high school students who lead the next generation. Arita's historical townscape is changed into a modern one during the event.



Arita Porcelain Bowl Illumination

■ December 31

The people who pay the first visit of the year to Tozan-jinja shrine are welcomed by about 1,000 candles in bowls. Arita's local dish 'Yukinotsuyu', miso soup with rice cakes, is also served.

What is Arita Ware?

Arita ware refers to porcelain made in the town of Arita and the surrounding areas in Saga Prefecture. Although it was known as Imari ware or Hizen ware during the Edo period, the term 'Arita ware' came into general use during the Meiji period.

When Toyotomi Hideyoshi sent his armies into Korea at the end of the 16th century, the Nabeshima lord forced the Korean potter Yi Sam-pyeong (Kanagae Sanbei in Japanese) and his apprentices to relocate to his domain in Japan. Kanagae is said to have moved to Arita at the beginning of the 17th century, where he discovered high-quality porcelain stone at Izumiyama. Celebrated as the birthplace of Japanese porcelain, Arita has produced tableware, art crafts and expressive works in ceramic for over 400 years, and this tradition continues on to the present day.

History of Arita Ware

Arita Ware during the Edo Period

Porcelain production in Arita began in earnest when Korean Yi Sam-pyeong (first-generation Kanagae Sanbei in Japanese) and his potters relocated to the area and discovered porcelain stone at Izumiyama in the early 17th century. As porcelain produced in Arita was shipped from the nearby port town of Imari, it was known as Imari ware at the time.

Arita ware produced between 1610s and 1650s is called Shoki Imari (Early Imari). Under the influence of China, sometsuke (underglaze cobalt blue decoration) was the prevailing design style during this period. Porcelain made at this time had thickly potted bases and an overall rustic feel.

Sakaida Kakiemon I succeeded in producing overglaze polychrome enamel porcelain for the first time in Japan during the 1640s. Overglaze enamel was applied to glazed ceramics to produce colourful designs. The introduction of vibrant new colour palette to what was up to that point monochromatic blue created a sensation.

Early products sporting this overglaze polychrome enamel technique produced between the 1640s and the 1660s are known as early polychrome enamel (Shoki iro-e) porcelain. There are two main styles, gosaide (five-colour overglaze polychrome) utilising red, green, yellow, blue and purple enamels, and aoide utilising green, yellow, purple and blue colours that cover the entire surface of the porcelain in overglaze enamel.

During the 1650s, the Dutch East India Company (VOC) began exporting Arita ware to many parts of Southeast Asia and Europe. Possessing porcelain in Europe became a status symbol among royalty and the aristocracy since the techniques for producing true porcelain made in China and Japan were still unknown to them at the time. Arita ware in European aristocratic collections was known as Imari, and Arita porcelain continues to be highly appreciated today.

From the 1670s to the 1690s, the Kakiemon style came into fashion. A classic characteristic of Kakiemon style is the nigoshide milky-white body. Asymmetrical design compositions are placed carefully against the milky-white ground. Many objects in Kakiemon style were exported to European countries and displayed in the palaces of European nobility. They were also copied in the kilns of Meissen in Germany and Chantilly in France.

In the second half of the 17th century, the local government to support the Nabeshima lord moved the domains' official kiln from Arita to Okawachiyama in the city of Imari. This kiln produced porcelain exclusively for the Nabeshima clan to be used as gifts for the Tokugawa Shogunate, nobility and other lords (daimyo). This type of porcelain is known as Nabeshima style ware. It is characterised by its sophistication, standardised shapes and regulated designs in overglaze polychrome enamels, underglaze cobalt blue and celadon. The products and the manufacturing process were strictly controlled by the Nabeshima domain.

During the Genroku era (1688-1704) of the Edo period, a style known as kinrande emerged. This style, that has been passed down to the present day, and of decorative designs depicting flowers and other nature inspired elements executed in reds and gold enamels on underglaze blue decorated porcelain. The designs often cover the entire surface. These lavish decorations are thought to reflect the economic prosperity of the Genroku era, and the style found favour in Europe on account of its ornate patterns. Even today, many kinrande style wares, including large vases, can be seen at museums and palaces around the world.

Arita Ware during the late Edo Period (1800-1860s)

During the late Edo period, Arita had a significant economic downturn. In 1828, the town experienced a major fire that destroyed a large section of the town. As porcelain production grew during this period in the Mino and Seto areas of modern day Gifu and Aichi prefectures, Arita lost its edge in the domestic market. Export of Arita ware to Europe began to decline from the mid-18th century, until Hisatomi Yojibei, a wealthy Arita merchant, acquired an exclusive export license and resumed the export of porcelain products to Europe in 1841. Hisatomi marked the pieces he made with characters reading 'Zoshuntei Sanpozo', the first instance of such branding on porcelain.

Exclusive exports by Hisatomi and his associates during the Bakumatsu period (1850s-1860s) came at a significant time of change. Only 16 workshops were licensed to execute overglaze paintings, although there were increasing calls to expand on those numbers. Ultimately, trading rights were subsequently extended by granting export licenses to an additional nine merchants, including Fukagawa Eizaemon and Hirabayashi Ihei. The Sarayama magistrates' office, which had long controlled the area, closed when domains were abolished in favour of prefectures in 1871. This eliminated the practice of licensing kilns and overglaze painters and freed the Sarayama ceramics businesses allowing for competition.

Arita Ware during the Meiji Period (1868-1912)

Gottfried Wagener, a German chemist, was invited to Arita by the Nabeshima domain in 1870 to teach local potters Western chemistry. He introduced a new firing technique using coal kilns and artificial cobalt blue paint instead of natural pigments derived from ore. The Nabeshima official kiln was eventually abolished when domains were replaced by the system of prefectures during the Meiji Restoration.

Arita ware from the Meiji period gained renown by being exhibited at World Expositions, which were frequently held in cities across Europe at the time. Saga domain participated in the World Exposition of 1867 in Paris, exhibiting Arita ware together with the Satsuma domain at the request of the Tokugawa government and garnering praise for the items exhibited. At the same time, Japonisme spread throughout the continent from Paris, and the popularity of the exhibits after the Vienna World Exposition generated pressure on the government to meet growing demand, leading to the establishment of Kiryu Kosho Gaisha, Japan's first company to serve as a general trading company.

Arita ware was subsequently sent to World Expositions in Vienna (1873), Philadelphia (1876) and so on, where works by Koransha, Seijigaisha, and Fukagawa Seiji won gold medals and other prestigious awards. The ambitious efforts to participate in World Expositions during this period resulted in a renewal of interest and a high regard for Arita ware overseas.

Arita Ware after the Taisho Period (1912-to present)

During the 1910s, the demand for industrial products and electrical insulators grew, benefiting the Arita porcelain kilns. A small ceramic market, which started as a supporting event for an annual ceramic competitive show that began in 1896, was officially established in 1916. This market went on to develop into the current Arita Ceramic Fair.

During the 1920s, a nationwide recession affected production in Arita. Large ceramic industries in Seto and Mino reduced prices and Arita kilns could not compete, which led to increasing unemployment. Some unemployed potters opted to found their own kilns, resulting in the emergence of a sector of small-scale ceramic artists. The publication Matsuura Tojiho Newspaper reported that more than 30 such potters were operating around the end of 1930.

During World War II, kilns were forced to become military arsenals and produce military-related products made from porcelain such as coins, hand grenades, and rocket parts. The kilns' output was controlled by the government and distribution and pricing was regulated. Reflecting the fear that these changes would lead to the loss of advanced manufacturing technologies, a small number of kilns and potters received 'Art Preservation' and 'Technique Preservation' designations that allowed them to produce and sell products outside the militarised economy. Under the 'Art Preservation' designation Matsumoto Haizan in Arita produced art objects, while under the 'Technique Preservation' designation Kakiemon kiln, Imaemon kiln, Koransha, Fukagawa Seiji, Kawanami Kisaku, and Mitsuomatsu Soichi produced skilled porcelain works using traditional techniques that lay between art objects and everyday products.

After the war, in the 1950s and 1960s, both production volume and sales of Arita ware increased substantially.

In 1976, the Kakiemon Ceramic Techniques Preservation Society and the Iro-Nabeshima Imaemon Ceramic Techniques Preservation Society were designated as Important Intangible Cultural Properties by the government. In 1980, the ruins of the Tengudani kiln site, Yanbeta kiln site, Haraake kiln site, and Izumiyama quarry were designated as National Cultural Heritage sites. In 1991, the Arita Uchiyama area was designated as an Important Preservation District for Groups of Traditional Buildings. In this way, Arita's cultural value was recognised on a national level.

Today, production of tableware and fine art-crafts remains at the centre of the Arita porcelain industry, although its companies also manufacture other industrial products, including tiles, insulators, and acid resistance porcelain.

From the 1610s



Shoki Imari (Early Imari) style
Dish with landscape design
in underglaze cobalt blue
(Arita Ceramic Museum)



Kakiemon style
Hexagonal jar with bird and flower design in overglaze polychrome enamels
(The Kyushu Ceramic Museum)



Nabeshima style
Dish with peach design in underglaze
cobalt blue and celadon glaze
(The Kyushu Ceramic Museum)

From the late 17th century



Kinrande style
Dish with flower and basket design
in overglaze polychrome enamels
(Arita Ceramic Museum)

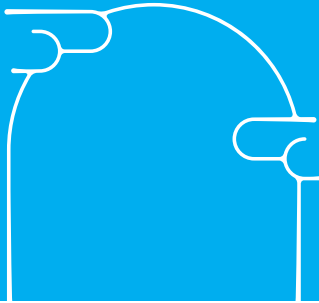
1870



Gottfried Wagener
(1831-1892)

Gold Medal winner at the 1900 Paris World Exposition
Large vase with phoenix and circle pattern design in
overglaze polychrome enamels, made by Fukagawa Seiji
(Currently on display at the Chūji-Kan, China On The Park)

1900



Ceramic coins
(Arita History and Folklore Museum)

Arita ware encompasses a variety of styles



Hakuji: White Porcelain
This type of porcelain has a white body that is covered with glassy translucent glaze, and fired at high temperature.
Picture: Small flower-shaped white porcelain cup (Mr. and Mrs. Shibata Collection, The Kyushu Ceramic Museum)



Yōkoku: Relief Design
Created with a Mould
Designs are created by pressing a mould with a pattern into the clay body.
Picture: Chrysanthemum-shaped white porcelain dish (Mr. and Mrs. Shibata Collection, The Kyushu Ceramic Museum)



Sometsuke: Underglaze Cobalt Blue Porcelain
Designs are painted with cobalt-based pigments (gosu) covered with transparent glaze and then fired at a high temperature which causes the gosu to turn blue.
Picture: Bottle with pine, bamboo, and fruit tree design in underglaze cobalt blue (Mr. and Mrs. Shibata Collection, The Kyushu Ceramic Museum)



Iro-e: Overglaze Polychrome Enamel Porcelain
Designs are painted onto the already fired and glazed ceramic body in red, yellow, green, purple, gold, and silver enamels (overglaze enamels).
Picture: Dish with bird and flower design in overglaze polychrome enamels (Mr. and Mrs. Shibata Collection, The Kyushu Ceramic Museum)



Seiji: Celadon
Glaze to which a small quantity of iron oxide has been added in order to obtain a blue-green colouring after a reduction firing.
Picture: Rectangular dish in celadon glaze (Mr. and Mrs. Shibata Collection, The Kyushu Ceramic Museum)



Ruriyū: Porcelain with Cobalt Blue Glaze
Glaze to which cobalt oxide has been added to obtain a deep blue colour after firing.
Picture: Gourd-shaped bottle with twist design in cobalt blue glaze (Mr. and Mrs. Shibata Collection, The Kyushu Ceramic Museum)



Sabiyū: Porcelain with Iron Brown Glaze
Glaze to which iron oxide has been added to obtain a brown colour after firing.
Picture: Small lobed dish in iron blown glaze (Mr. and Mrs. Shibata Collection, The Kyushu Ceramic Museum)



Shinsha: Porcelain with Copper Red Glaze
Glaze to which copper oxide has been added to obtain a vivid red colour after reduction firing.
Picture: Bottle with design in underglaze copper red (excavated from Hirose Mukai Kiln Site No.1, Arita Board of Education)



Permanent exhibition "History of Arita Ware"



The Shibata Collection



The Kanbara Collection

The Kyushu Ceramic Museum

3100-1 Toshaku-Otsu, Arita-cho
☎0955-43-3681
MAP : F-7
Hours 9:00 am – 5:00 pm
Fee Free (There may be a charge for some special exhibitions)
Closed Mondays (In case it is a national holiday the museum will be open that day and closed on the next weekday.),
Year-end (29-31 Dec)
Parking up to 300 cars

This is a museum focussing on ceramics, collecting and exhibiting pieces of ceramics from the Hizen area, other parts of Kyushu and current ceramic artists. One of the permanent exhibitions is the renovated "History of Arita Ware", introducing famous pieces of Arita Ware as well as pictures. You can enjoy a variety of interesting background stories of Arita Ware walking through the different exhibition rooms focussing on history and culture. The [MY ARITA] corner where you can experience making your very own original design on a monitor is also very popular. [The Shibata Collection] that systematically lines up Arita Ware from the Edo Period is a must-see.



Sometsuke-style Large Plate with Arita Ware Craftsmen Design



Arita Ceramic Museum

MAP : G-5
1-4-2 Odaru, Arita-cho
☎0955-42-3372
Hours 9:00 am – 4:30 pm
Fee Adult 120yen/Group 80yen
High school student and below Free
Closed Mondays,
Year-end & New Year holidays
Parking Available



Arita History and Folklore Museum

MAP : H-5
1-4-1 Izumiyama, Arita-cho
☎0955-43-2678
Hours 9:00 am – 4:30 pm
Fee Adult 120yen/Group 80yen
High school student and below Free
Closed Year-end & New Year holidays
Parking Available



A ceramics storage built in 1874 was renovated and this place was opened in 1954. There is a ceramic board on a monument with the [Arita Sarayama nite] poem by the symbolist poet Ariake Kanbara on the outside the walls of the museum and the museum itself is also designated as a part of the Important Preservation District for Groups of Traditional Buildings. Inside the museum you can see Saga Prefecture Important Cultural Assets such as [Touchou Akae no Komainu] and [Sometsuke-style Large Plate with Arita Ware Craftsmen Design]. Besides that, they also have collections of Arita Ware from the time of the beginning of the industry to the present. The museum itself is a historic building, a small retro art gallery focussing on Arita Ware.

*Reservation needed for explanations of the exhibition

A museum located next to Izumiyama Quarry, the birthplace of Arita ware. Materials related to Arita's history and folklore have been collected and preserved here. Porcelain grenades and coins made during World War II are also on display. An old rotary quern and a kiln are located outside and the changing of the leaves during autumn is a beautiful sight.

*Reservation needed for explanations of the exhibition



Imaemon Kiln/ Imaemon Museum of old Ceramics

2-1-11 Akaemachi, Arita-cho
☎0955-42-5550
MAP : G-6
Hours Tue to Fri/1:00 pm–4:00 pm
Sat,Sun/10:30 am–4:30 pm
Fee Adult 300yen/Group 200yen (above15)
Special exhibitions have an additional charge.
Closed Mondays (if falls on a national holiday,
Tuesday will be closed)
Year-end & New Year holidays (Dec 29 to Jan 6)
Parking Available



This is one of Japan's various [Iro-Nabeshima] collections. They have been assembled and passed on from generation to generation among the Imaemon and display Koimari and historic Imaemon pieces together with production utensils and fragments of old kiln remains.



Kōransha Museum of Old Ceramics

1-3-8 Kobira, Arita-cho
☎0955-43-2132
MAP : G-6
Hours 9:00 am – 5:00 pm
Fee Free
Closed Year-end & New Year holidays
Parking up to 15 cars



Located on the second floor of the head office which was built during the Meiji period (1868-1912). The gallery houses fine pieces which were supplied to the Imperial Household Agency and were awarded at world expositions and various exhibitions. Don't miss the opportunity to see the historical fine arts.



Arita Porcelain Park/ Zwinger Palace Art Gallery

340-28 Toya-Otsu, Arita-cho
☎0955-41-0030
MAP : G-7
Hours Weekdays/10:00 am – 4:00 pm
Sat, Sun, Holidays/10:00 am – 5:00 pm
Fee Adult 600yen/
High School & Junior High School Student 400yen/
Elementary Student Free
Closed Irregularly
Parking Available



The gallery was constructed in the image of The Zwinger of Dresden, Germany and you can enter the Arita ware porcelain world with fine arts exported to the world from the 1850s to the 1910s. A big vase, 182 centimeters high, which was sent to the Vienna World Exposition held in 1873 is a must-see.



Kajiken Seiji Mould Museum

2892 Kuromuta-Hei, Arita-cho
☎0955-42-3177
MAP : E-5
Hours 9:00 am – 5:00 pm
(Open only during the time of the Arita Ceramics Fair or when a reservation is made.)
Fee Free
Closed Reservations necessary
Parking Available



Kajiken Seiji is a long-established kiln and its museum displays the molds which had been used in the kiln before plaster and machines emerged. A part of thousands of molds ranging in size from 4 inches for a small dish to 50 inches used for a large plate are on display.



Kakiemon Kiln/Kakiemon Museum of Old Ceramics

MAP : E-6
352 Nanzan-Tei, Arita-cho
☎0955-43-2267
Hours 9:00 am – 5:00 pm
Fee Free
Closed Year-end & New Year holidays
Parking Available

A porcelain museum attached to the 15th Kakiemon's kiln that displays the kiln's representative works including Kakiemon-style big jars and vases that attracted attention throughout the world. Visitors can appreciate the origin and 380-year history of the Kakiemon kiln and its transition over time.



Fukagawa Seiji China On The Park

111 Haraake-Otsu, Arita-cho
☎0955-46-3900
MAP : C-6
Hours 9:00 am – 5:30 pm
Fee Free
Closed Tuesdays
(Open in case it is a national holiday.)
Year-end & New Year holidays
※"CURRY HOUSE KURINTO" is closed on Tue, Wed
Parking Available



China On The Park is a ceramic theme park operated by Fukagawa Seiji Porcelain Company, a purveyor to the Imperial Household Agency. Gallery 'Chuji Kan' houses outstanding porcelain from the Fukagawa collection including a big vase which was awarded at the Paris World Exposition held in 1900.



Eizaburo Hara Museum

1-1-10, Nakanohara, Arita-cho,
☎0955-42-2840
MAP : F-6
Hours 12:00 pm – 4:30 pm
Fee About 200yen
Junior High School Student and below Free
Closed Irregular
Parking Available



Enter the universe of Eizaburo Hara! The museum exhibits modern artworks and ceramic art. The building and garden date back the early 19th century.



Gen-emon Kiln/ Ko-Imari Museum

2726 Maruo-Hei, Arita-cho
☎0955-42-4164
MAP : E-5
Hours 9:00 am – 4:00 pm
Fee Free
Closed Sat,Sun,Holidays
Year-end & New Year holidays
Parking Available



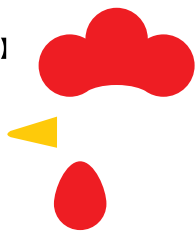
This museum is attached to Genemon Kiln which has a history of 260 years and shows old Imari and other old ceramics which were collected by the kiln to use as their reference materials. It's an overwhelming experience to see fine arts from all over the world with your own eyes.

Arita-yaki Gozen

Arita-yaki Gozen is a new lunch special served by 4 famous restaurants in Arita which features 5 different cooked chicken dishes in an Arita ware lunch box. Both local ingredients and Arita ware can be enjoyed at the same time. These special porcelain lunch boxes inspired by a jewelry box or a casket are served with a lid and tied with a beautiful string. You will be fascinated by not only its elegant presentation but also its beautiful porcelain container.

[All Restaurants 1,800 (tax included)]

*Reservations are recommended.
*Reservations may not be accepted during
Arita Ceramic Fair (Apr 29 to May 5)



ARITA GOURMET



① Sushi Restaurant Kamei-Sushi MAP: F-6

A famous sushi restaurant where more than 50 years experienced chef serves jewel-like sushi and a wide range of authentic Japanese dishes. Kamei Sushi's Arita-yaki Gozen comes with gorgeous chirashi sushi(sushi dressed with various ingredients).

2-10-12 Iwatanigawachi, Arita-cho
☎0955-43-2951
Hours: 11:30 am to 2:30 pm/
5:00 pm to 9:30 pm (last call)
Reservations necessary for
Arita-yaki Gozen after 5:00 pm
Closed: Irregularly Parking: up to 18 cars



② Gallery Arita MAP: F-7

Enjoy the atmosphere of Arita surrounded by as many as 2,500 coffee cups. One of this restaurant's features is that your coffee can be served in your favorite cup. Gallery Arita's Arita-yaki Gozen is well known for its women-friendly and health-conscious chicken dishes.

3057 Honmachi-Otsu, Arita-cho
☎0955-42-2952
Hours: 11:00 am to 5:00 pm
(4:30 pm last call)
Arita-yaki Gozen:
11:00 am to 2:00 pm
Closed: Irregularly Parking: up to 25 cars



③ Restaurant Maruishi MAP: E-6

A popular restaurant among all ages with various dishes on the menu and the tastiness of the meals is guaranteed. Their menu includes Arita specialties and pizza baked with home-made ham and bacon. Maruishi's Arita-yaki Gozen provides five distinctly different chicken dishes.

731-1 Toshaku-Hei, Arita-cho
☎0955-42-4680
Hours: 12:00 pm to 2:00 pm/
(4:30 pm to 8:30 pm (last call)
Closed: Irregularly Parking: up to 18 cars

A



B



C



D



E



F



G



H



I



E

Arita Terrace's Arita-yaki Curry

MAP: F-6

Winner of the JR Kyushu Ekiben Grand Prix, the Arita-yaki Curry is served in an Arita-yaki and incorporates the flavor and aroma of 28 different spices. Additionally, the Arita-yaki is very convenient for after use. The patterns of the bowls are sometimes changed.

H

Etoile Horie (Arita Branch)'s Tonbai Arita

This sweet is designed after tonbai walls, which can be found in Arita's back alleys and which are built from bricks and waste material.

1023 Honmachi-Hei, Arita-cho
Phone: 0955-43-2203
Hours: 9:30 am – 6:30 pm
Closed: New Year's Day
Parking: Not Available

MAP: F-6

F

Godofu

Godofu is a chewy tofu unique to Arita made from soy milk and kudzu (arrowroot) flour with a traditional method. The most common sauce is sesame, but brown sugar syrup and soybean flour are also recommended.

Takashima Tofu Shop
2-9-7 Iwatanigawachi, Arita-cho
Phone: 0955-43-2463
Hours: 8:00 am – 5:00 pm
Closed: New Year's Day Parking: Not Available

MAP: F-6

Takahashi Tofu Company
1525 Honmachi-Hei, Arita-cho
Phone: 0955-43-3252
Hours: 8:00 am – 6:00 pm (Dec - Feb 8:00 am - 5:15 pm)
Closed: Irregularly Parking: Available

MAP: E-6

Souvenirs

A

Un Beau Jour's Baked Pudding

A smooth and gorgeous pudding in an Arita ware cup. The cups with different patterns can be used at home after eating.

1933-1 Maruo-Hei, Arita-cho
Phone: 0955-41-1122
Hours: 10:00 am – 7:30 pm
Closed: Wednesdays Parking: up to 6 cars

MAP: E-6

B

Yoshinaga-Confectionary's Hamaemon Cookie

A cookie modeled after Hama, a stand used as a cushion in making porcelain products. The idea is unique to Arita and its shape is very cute.

92-7 Nanbaru-Ko, Arita-cho
Phone: 0955-42-3521
Hours: 9:00 am – 7:00 pm
Closed: Tuesdays Parking: Available

MAP: E-5

C

Maeda-Tosukedo's Tosuke Okoshi

Pieces of rice cake are roasted and shaped with starch syrup. It has a crispy texture and a ginger taste. Once you try, you will become hooked.

1-16-12 Izumiyama, Arita-cho Phone: 0955-42-4411
Hours: Weekdays: 8:00 am - 11:00 am/2:00 pm - 5:00 pm
Sat, Sun, Holidays: 8:00 am - 6:00 pm
Closed: Irregularly Parking: Not Available

D

Tenmadou's Hakuji Saika

Pottery-style cookies printed with Arita-yaki designs. The thoughts and history behind the design will be delivered through the cookies.

Stores: The Kyushu Ceramic Museum, Arita Station
"Arita Meihinkan", Arita-Kan, etc.

G

Munemasa Sake Brewery's Pure Rice Premium Sake 'Munemasa'

A pure rice premium sake with a harmonious balance of a sweet fragrance and a fruity deep flavor. Can be served with a wine glass.

340-28 Toya-Otsu, Arita-cho
Phone: 0955-41-0020

MAP: G-7

I

Tomosuya's Chawan Monaka

This is a Monaka (wafer cake filled with bean jam) imitating a rice bowl with a lid made of Arita Ware. Recreated in a size that fits in the palm of the hand. Please add anything you like to the sweet inside and eat it.

2-3-21 Odaru, Arita-cho
Phone: 0955-29-8929
*Reservations for purchases are now open!
Closed: Saturdays, Sundays, Holidays

MAP: G-6

Restaurant Japanese Cuisine Noodles & Rice Bowls Korean Cuisine/Korean BBQ Cafe To-Go

East Area

No.	Restaurant Name	Type	Phone	MAP
④	Seibōan Minami	Japanese Cuisine	☎0955-42-5560	G-7
⑤	Eki Café SARAYAMA	Cafe	☎090-5069-2523	H-5
⑥	CONNECT.	Cafe	☎080-1723-7010	G-5
⑦	Hitofushi Ramen	Noodles & Rice Bowls	☎0955-42-3024	G-5
⑧	Arita Porcelain Lab Café	Restaurant	☎0955-29-8079	G-5
⑨	Meiji Yumean (Open Only Sat & Sun)	To-Go	☎0955-41-1505	G-5
⑩	Gettoan Saredo	Cafe	☎0955-43-3760	G-6
⑪	Confectionary "Un Beau Jour" (Akai Town Store)	To-Go	☎080-8394-9787	G-6
⑫	kasane	Japanese Cuisine	☎0955-42-3100	F-6
⑬	Italian Bar DOMA	Restaurant	☎090-2853-2068	F-6
⑭	SPICE HOTARU (Open Only Fri & Sat)	Restaurant	Instagram: spice_hotaru	G-7
⑮	Aji Eal Restaurant	Japanese Cuisine	☎0955-42-4010	F-6
⑯	Gallery Baekpasun Café 100bar	Cafe	☎0955-25-9683	F-6
⑰	Café Terrace AYA	Cafe	☎0955-43-3681	F-7
⑱	Café Restaurant Copain	Restaurant	☎0955-43-2880	F-7
⑲	Taro Ramen Shop	Noodles & Rice Bowls	☎0955-42-4311	F-7

West Area

No.	Restaurant Name	Type	Phone	MAP
⑳	Arita Porcelain Park	Restaurant	☎0955-41-0030	G-7
㉑	Okazuya Takechan	To-Go	☎0955-42-3195	G-7
㉒	Kyoto Cuisine Yaowa	Japanese Cuisine	☎0955-42-2292	F-7
㉓	hapi cafétta	To-Go	☎0955-42-2057	F-6
㉔	Japanese Restaurant Yasuna	Japanese Cuisine	☎0955-42-2733	E-6
㉕	DAIKICHI cafe	Cafe	☎0955-25-9003	F-5
㉖	arita huis	Restaurant	☎0955-25-8018	E-5
㉗	Japanese Restaurant Akae	Cafe	☎0955-42-5437	E-5
㉘	MARUBUN BAKERY CAFE	To-Go	☎0955-43-2351	E-5
㉙	Korean Restaurant Toraji	Restaurant	☎0955-42-6934	E-5
㉚	ILHA / CAFÉ	Cafe	☎0955-42-2575	F-6
㉛	Soba Restaurant Norito	Noodles & Rice Bowls	☎0955-43-2890	E-7
㉜	Sushi Restaurant Kureba	Japanese Cuisine	☎0955-42-2934	E-6
㉝	Kitchen Grandma	Cafe	☎0955-43-5010	E-6
㉞	Ōkawa Udon	Noodles & Rice Bowls	☎0955-42-3345	D-6

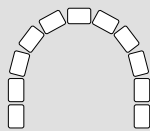
No.	Restaurant Name	Type	Phone	MAP
㉟	CURRY HOUSE KURINTO	Restaurant	☎0955-46-5000	C-6
㊱	China On The Park Chuji Hall Refresh Room	Cafe	☎0955-46-3900	C-6
㊲	Yakiniku Kamura	Cafe	☎0955-46-3310	C-6
㊳	Soba Miyoshi	Noodles & Rice Bowls	☎0955-46-2352	C-6
㊴	Azuma-ya	Restaurant	☎0955-46-3033	C-5
㊵	Yamato Isshin'an Setsugetsuka	Noodles & Rice Bowls	☎0955-46-3170	B-5
㊶	Shungyo Kisai Ikesu Yamashita	Japanese Cuisine	☎0955-46-3923	C-6
㊷	Morisei	Japanese Cuisine	☎0955-46-2263	C-3
㊸	Fried Chicken Karaage Don Don	Japanese Cuisine	☎0955-46-4660	C-3
㊹	Kanzantei	Japanese Cuisine	☎0955-46-3511	C-2
㊺	Kawazakana Ryūsuitei	Japanese Cuisine	☎0955-46-2155	F-3
㊻	Sōsaku Kawazakana Ryūsensō	Japanese Cuisine	☎0955-46-3617	E-3



Arita Souvenirs

Walking around the Uchiyama area: See, Learn, Play

Explore the porcelain town to feel the winds of history and atmosphere.



Townscape of the Uchiyama Area

MAP: F-6, G-5, G-6

The area which has watched the development of Arita ware for 400 years was designated as a National Important Traditional Structures Preservation area. The streets are lined with old Japanese plaster houses, western-style houses, kiln showrooms and so on.

Locations: Arita-cho Izumiyama, Kamikohira, Odaru, Kobira, Akae-machi, Nakanohara, Iwatanigawachi areas
Parking: Available

Tombai Walls

MAP: G-5

One of the highlights you can see while walking around the Uchiyama area is Tombai walls. Tombai walls are walls made of old bricks used for climbing kilns, fragments of old porcelain, disposed tools used in making porcelain products and red clay.

Locations: Arita-cho Izumiyama, Kamikohira, Odaru, Kobira, Hiekoba, Akaemachi areas
Parking: Available

Strolling through the town

Tozan Shrine/ Yi Sam-pyeong Monument

MAP: G-6

Tozan shrine is a Shinto shrine founded in around 1658 and dedicated to Emperor Ojin and Yi Sam-pyeong, the father of Arita porcelain. A big Shrine gate (Torii), a pair of guardian dogs, a big jar and parapets in the shrine are made of porcelain.

A monument which praises Yi Sam-pyeong's achievement, a five-minute walk from Tozan-jinja shrine, was built in 1917 in commemoration of the 300th anniversary of Arita porcelain. From here, you can command a panoramic view of Arita town.

2-5-1 Odaru, Arita-cho
☎0955-42-3310
Parking: up to 20 cars

Pottery Studio "Akae-za"

MAP: F-6

An incubation studio to support young potters who wish to start a kiln in Arita. Not only you can watch porcelain making processes, but also experience porcelain painting. Young potters' pieces are also on sale.

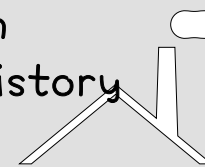
1-2-18 Akaemachi, Arita-cho
☎0955-41-1310
Hours: 10:00 am - 4:00 pm
Closed: Irregularly
Parking: up to 2 cars

Fragments of old porcelain and also old kiln tools are used for the walls.



Walking around the town to learn about Arita's history

Let's learn about the history and tradition of Arita at galleries and museums looking closely at fine arts.



Various colorful ceramics are on display.

These beautiful pieces are really fine arts.

This is a must-see collection!

The Kyushu Ceramic Museum

MAP: F-7

The best place to learn about the ceramic history of Arita. (refer to page 5)

Imaemon Kiln/ Imaemon Museum of old Ceramics

MAP: G-6

Imaemon kiln, a kiln which carries on the history and the tradition of Iro-Nabeshima Style, and its museum (refer to page 6)

Inoue Manji Kiln

MAP: E-6

Mr. Inoue Manji's kiln and his gallery are located in a quiet residential area. Mr. Inoue is a Living National Treasure and a leading artist for white porcelain. He is also enthusiastic to teach young potters.

307 Nanzan-Tei, Arita-cho
☎0955-42-4438
Hours: 9:00 am - 5:00 pm
Closed: Year-end & New Year holidays, July & August

Gen-emon Kiln/ Gen-emon Kiln Ko-Imari Museum

MAP: E-5

Gen-emon Museum of Ko-Imari Porcelain attached to Gen-emon kiln (refer to page 6)

Kakiemon Kiln/ Kakiemon Museum of Old Ceramics

MAP: E-6

A Kakiemon-style old porcelain museum attached to Kakiemon kiln with a history of 380 years. (refer to page 6)

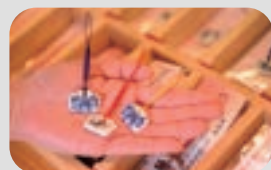
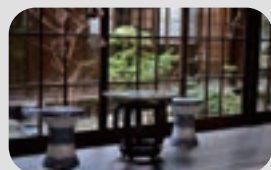
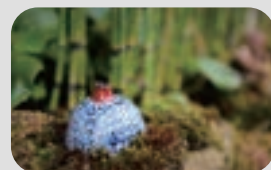
Aoki Ryūzan Kiln

MAP: E-6

The works of Mr. Aoki Ryuzan, an Order of Culture winner and a member of the Japan Art Academy (passed away in 2008), and his son Aoki Kiyotaka, a councilor of the Japan Fine Arts Exhibition (passed away in 2015), are on display in the gallery built by Mr. Aoki Junichiro, a trader, in the early 1910s.

1579-10 Hokaoyama-Hei, Arita-cho
☎0955-42-3272
Hours: 10:00 am - 5:00 pm
Closed: Irregularly
Parking: up to 3 cars

We have more and more!



Walking Around the Town Looking for Favorite pieces of porcelain

Shopping is one of the most enjoyable parts of traveling.
Try to find your favorite ones while walking around the town.

Kōransha Porcelain Company

MAP : G-6

Kōransha is a long-established porcelain maker with a history of over 130 years. The company has been leading the industry by resuming exports and introducing innovative methods. The head office in Arita, built around 100 years ago, has a showroom on the first floor and an old ceramics museum on the second floor.

1-3-8 Kobira, Arita-cho
☎0955-43-2132
Hours: 9:00 am - 5:00 pm
Closed: Year-end & New Year holidays
Parking: up to 15 cars

Fukagawa Seiji Porcelain Company Main Store

MAP : G-5

Famous for its blue paint called Fukagawa Blue, Fukagawa Seiji is one of the top porcelain manufacturers in Arita. Its products are loved by both in Japan and abroad. The head office has a showroom on the first floor and a museum featuring its history and tradition on the second floor.

1-1-8 Kobira, Arita-cho
☎0955-42-5215
Hours: 9:00 am - 5:00 pm
Closed: Year-end & New Year holidays
Parking: up to 10 cars

Arita Dam

MAP : G-4

The lake is called 'Secret Color Lake' because of its celadon color water. Green, red, orange, and yellow leaves are beautifully reflected on the water of the dam depending on the seasons. Taking a stroll along the walking trail is also recommended.

Address: Shirakawa, Arita-cho
Parking: Available

Ryumon Campground

MAP : F-3

Close to Ryumon dam and the trail entrance to Mt. Kurokami, Ryumon valley campground can be used as a climbing camp. Camping huts are also available and a day trip is acceptable, so why don't you enjoy outdoor activities in the woods?

Address: Hiroseyama, Arita-cho
☎0955-46-4022
In case you have difficulty getting through, please call the Agriculture & Forestry Division at Arita Town Office ☎0955-46-5616 (weekdays only)
Parking: Available

Arita Será

MAP : E-5

Arita Será is a ceramics shopping mall that consists of 22 shops carrying various products ranging from daily tableware to fine arts. A big parking lot and restaurants being available, take your time to find your favorite ones.

2351-169 Akasaka-Hei, Arita-cho
☎0955-43-2288
Hours: 9:00 am - 5:00 pm
(Different from store to store)
Closed: Open 365 days
Parking: up to 800 cars

Arita Porcelain Park

MAP : G-7

Dubbed a 'Theme Park of Ceramics', Arita Porcelain Park is a commercial complex that includes a museum where ceramics from all over the world are on display, restaurants, an outlet shop, a sake brewery, souvenir shops, a porcelain-making experience studio, and so on. A good place for those who want to use time efficiently.

340-28 Toya-Otsu, Arita-cho
☎0955-41-0030
Hours: 9:00 am - 5:00 pm
Closed: Open 365 days
Parking: up to 800 cars

Walking in The Nature

Arita is rich in natural beauty to delight the eye and fill the heart.
Fully enjoy nature and get refreshed.

Ryumon Valley

MAP : F-2

Selected one of the best 100 natural water and one of the best 100 water source forests, Ryumon valley has a magical atmosphere with its clear water, colorful leaves and rocks. Cherry blossoms in spring, green leaves in summer, foliage in autumn, and solemn atmosphere in winter. Make yourself relaxed in nature.

Hiroseyama, Arita-cho
☎0955-46-5616
(Agriculture & Forestry Division at Arita Town Office)
Parking : Available

Take Terraced Rice Fields

Tanada are terraced rice fields extending down a mountainside like a staircase. The most famous tanada in Arita is located in the Take area and it was selected as one of the best 100 tanada in Japan. The scenery is spectacular, especially the sunset view is beyond description.

Take area, Arita-cho
Parking : Available

MAP : A-2

More and more /

If you want to feel the atmosphere of Arita

We provide Arita experiences you'll never forget.

Potter's Wheel Experience

A professional potter will show you from the beginning how to shape porcelain on a potter's wheel.

Under Glaze Painting Experience

How about making your original porcelain item using a brush? Some studios offer accessory painting as well.

Porcelain Factory Visit

You can visit a factory and see how porcelain products are made by skillful artists.

Outdoor Activities

Arita is rich in natural beauty. Through mountain climbing and camping, fully enjoy nature and get refreshed.

More experience facilities are available. /

Experience Facilities List

No.	Facility Name	Inquiry	Hours	Contents (Yen)	*Tax included *Postage excluded	MAP
⑥1	Marukei (Toshiemon gama Kiln)	☎0955-42-3052	9:00 am - 4:00 pm (Reception hours)	Under Glaze Painting (Tea Cup, etc.) : 1,650 -		G-6
⑥3	Pottery Studio Rokuro-za	☎0955-41-1302	10:00 am - 4:00 pm (Closed : Thursdays, Same-day reservation until 1:30 pm)	Potter's Wheel : 1,360 -, Painting (Plate, Cup, etc.) : 1,050 -		H-5
⑥4	Studio Setsugetsuka	☎090-5938-2913	10:00 am - 4:00 pm (Reservations necessary)	Over Glaze Painting (Mug, Plate) : 2,000 -		G-5
⑥5	Atelier Yume	☎090-7475-5764	9:00 am - 5:00 pm (Reservations necessary)	Hand Pinching : 1,500 -, Under Glaze Painting (Rice Bowl, Plate, etc.) : 1,500 -		G-5
⑥7	Keizan-gama Kiln	☎0955-42-2947	9:00 am - 4:00 pm (Reservations necessary, Reservations only for weekdays)	Under Glaze Painting (Plate, etc.) : 2,200 -		G-6
⑥8	Gallery Shōbun Studio	☎090-5296-1765	9:00 am - 5:00 pm	Potter's Wheel : 5,000 - (Free shipping within Kyushu, additional shipping costs outside of Kyushu)		G-5
⑥9	Pottery Studio Akae-za	☎0955-41-1310	10:00 am - 4:00 pm (Reservations necessary)	Under Glaze Painting : 2,200 -		F-6
⑦0	Arita yaki Studio at Arita Porcelain Park	☎0955-41-0030	10:00 am - 2:30 pm (Reception hours, Reservations necessary)	Under Glaze Painting (12cm Plate, Small Cup, etc.) : 990 -, Potter's Wheel : 2,980 -		G-7
⑦1	Ninomiya Kanzan Accessory Studio	☎0955-43-2169	10:00 am - 5:00 pm	Under Glaze Painting (Wind-bell, Keychain, etc.) : 1,100 -		F-6
⑦2	arita mononosu (Gallery)	☎0955-42-3164	9:00 am - 4:00 pm (Weekdays only)	Under Glaze Painting (Plate, Mug, Square Plate, etc.) : 1,200 -		F-6
⑦3	Shingama Kiln	☎0955-43-2215	8:00 am - 5:00 pm (1:00 pm - 5:00 pm/Sat, Sun, Holidays, Reservations necessary)	Under Glaze Painting (Cake plate, Bowl, etc.) : 2,200 -		E-5
⑦4	Fukusen-gama Kiln	☎0955-43-2251	9:00 am - 4:00 pm (Weekdays only, Reservations necessary)	Under Glaze Painting (Plate, etc.) : 1,650 -, Factory visiting : Free		E-5
⑦5	Koraku-gama Kiln (Tokunaga Ceramics)	☎0955-42-4121	10:00 am - 4:00 pm (Reservations necessary)	Factory visiting (including present): 1,100, Treasure Hunting: 5,500 -, Target shooting with Arita Ware bow and arrow: 1,100 -, Painting (transfer printing or under glaze): 2,000 -, Artist in residence (30days): 300,000 -		F-5
⑦6	Noritō-gama Kiln	☎0955-43-2890	①10:00 am - ②1:00 pm - (Limited to 2 groups per day)	Potter's Wheel, Painting (Handmade Soba Noodles are served) 6,600 -		E-7
⑦7	Fukagawa Seiji China On The Park	☎0955-46-3900	9:00 am - 4:00 pm (Reservations necessary/ Closed : Tuesdays)	Over Glaze Painting (Tea Cup, Mug, Plate) : 1,100 -		C-6
⑦8	Shinpō Takeken Kiln	☎0955-46-2344	10:00 am - 4:30 pm (Reservations necessary)	Over Glaze Painting : 2,750 -, Under Glaze Painting : 2,750 -		C-2
⑦9	Yashiki Yozaemon Kiln	☎090-8668-4587	9:00 am - 6:00 pm (Reservations necessary) Transportation services to and from Arita station may be possible. (No services during the Golden Week)	Potter's Wheel : 4,400, Under Glaze Painting: 1,500-		B-1
⑧0	Shigemasa Kōbō Studio (Kajiwara Hironori)	☎090-5732-0215	①10:00 am - ②2:00 pm - ③4:00 pm - (Reservation is requested by the previous day)	Potter's Wheel (1 piece) : 3,300 - ※1,650 per piece from the second piece		E-5
⑧1	Arita Yanagi-gama Kiln	☎090-9737-5504	10:00 am - 4:00 pm (Reservations necessary/ Closed : Tuesdays)	Over Glaze Painting / Under Glaze Painting / Hand Pinching / Potter's Wheel : Adult ... 2,000, Kids under 12 ... 1,500		G-5
⑧2	Iori-Hisashi	☎0955-43-2764	1:00 pm - 6:00 pm (Reservations necessary)	Kintsugi: 9,000 (about 3 hours per person per day)		G-5
⑧3	Sō-gama Kiln	☎0955-42-3846	10:00 am - 6:00 pm (Same-day reservation until 3:00 pm)	Marbleware (Dish, checker pattern) : 2,750 - 3,850		H-6

* There are more facilities not listed here. If you have any questions, please contact each facility directly.

Accommodations List

* This list includes various types of lodging facilities. For more information, please contact each facility directly.

No.	Lodging Name	Inquiry	Address	Access, Website Information	MAP
⑨1	Seibōan	☎0955-42-5560	1448 Toya-Ko, Arita-cho	10 min. from Arita station by car website : http://seibouan.com/	G-7
⑨2	ILHA / ACCOMMODATION	☎0955-42-2575	1092 Honmachi-Hei, Arita-cho	3 min. from Arita station on foot Facebook available	F-6
⑨3	Keramiek Arita	☎080-3998-0477	2-2-2 Kobira, Arita-cho	7 min. from Arita station by car Facebook available	G-6
⑨4	Koraku-gama Kiln / Happy Lucky Guesthouse	☎0955-42-4121	2512 Maruo-Hei, Arita-cho	Long term stay possible (more than one week), 5 min. from Arita station by car	F-5
⑨5	RV Park Koraku-gama Kiln	Only online reservations (until 11pm that day)	2512 Maruo-Hei, Arita-cho	5 min. from Arita station by car website : https://rvparksmart.jp/rv-smart/	F-5
⑨6	Ryumon Campground	☎0955-46-5616 (Arita Town Office Agriculture & Forestry Division)	Hiroseyama, Arita-cho	15 min. from Arita station by car	F-3
⑨7	Sōfūsha INN	☎090-3799-1144	1517-12 Honmachi-Hei, Arita-cho	5 min. from Arita station on foot website : http://minshukuarita.jimdo.com/	F-6
⑨8	Japanese Style Guesthouse Arita	☎090-3799-1144	3080-12 Kuromuta-Hei, Arita-cho	7 min. from Arita station by car website : http://minshukuarita.jimdo.com/	D-5
⑨9	Hyakubasen Japan-Korea Friendship House	☎0955-25-9683	2-10-3 Iwataniyawachi, Arita-cho	7 min. from Arita station on foot website : http://www.baekpasun.com/	F-6
⑩0	arita huis	☎0955-25-8018	2351-170 Akasaka-Hei, Arita-cho	5 min. from Arita station by car website : http://aritahuis.com/	E-5
⑩1	Guesthouse HIRO	☎0955-42-6344	2722-136 Maruo-Hei, Arita-cho	5 min. from Arita station by car Facebook available	E-5
⑩2	CONNECT.	☎080-1723-7010	1-25-17 Izumiyama, Arita-cho	5 min. from Kami-Arita station on foot Instagram available	G-5
⑩3	Healing INN Fukuan	☎090-8767-4798	1568 Kitanokawachi-Hei, Arita-cho	Free Shuttle Service to and from the station (reservation required)	B-5
⑩4	Guesthouse HIRO Maibaru	☎0955-42-6344	2482 Maibaru-Otsu, Arita-cho	10 min. from Arita station by car Facebook available	C-6
⑩5	RV Park Arita Onsen	☎0955-42-6988	902 Nanbaru-Ko, Arita-cho	5 min. from Arita station by car	D-5
⑩6	Arita Coyote	☎090-1349-8294	3-9-3 Nakadaru, Arita-cho	8 min. from Arita station by car Facebook available	H-6
⑩7	Villa Kaede	villakaede@gmail.com	2-4-3 Kobira, Arita-cho	Facebook available	G-6
⑩8	Zoku Ijinkan Guest house	☎080-3902-7860	2-2-5 Kobira, Arita-cho	7 min. from Arita station by car	G-6
⑩9	Shukubo Shingetsu	☎0955-42-2733	799-1 Honmachi-Hei, Arita-cho	8 min. from Arita station on foot	E-6

